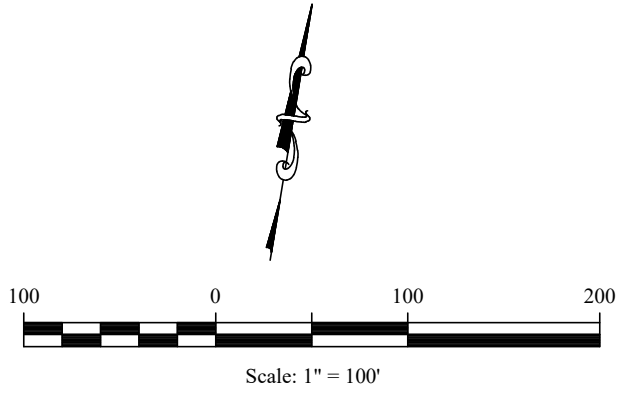


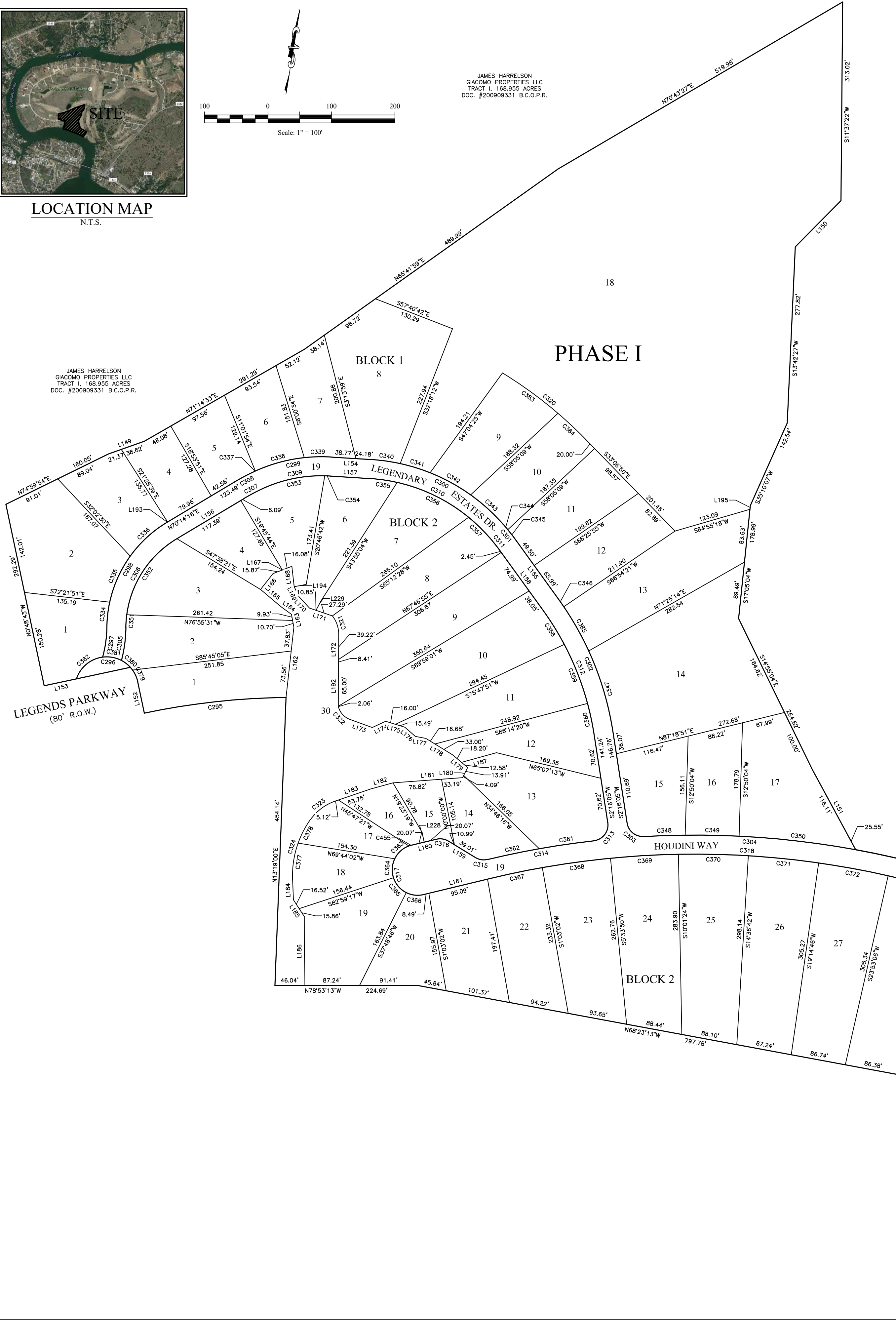


LOCATION MAP  
N.T.S.



JAMES HARRELSON  
GIACOMO PROPERTIES, LLC  
TRACT I, 168.955 ACRES  
DOC. #200909331 B.C.O.P.R.

JAMES HARRELSON  
GIACOMO PROPERTIES, LLC  
TRACT I, 168.955 ACRES  
DOC. #200909331 B.C.O.P.R.



LOT AREA TABLE

Table with 5 columns: Lot Number, Square Footage, Acreage, Buildable Square Footage, Maximum Allowable Impervious Cover. Includes Block 1 data for lots 1-18.

Table with 5 columns: Lot Number, Square Footage, Acreage, Buildable Square Footage, Maximum Allowable Impervious Cover. Includes Block 2 data for lots 1-30.

Table with 5 columns: Lot Number, Square Footage, Acreage, Buildable Square Footage, Maximum Allowable Impervious Cover. Includes Block 2 data for lots 1-8.

CURVE TABLE with 6 columns: CURVE, LENGTH, RADIUS, TANGENT, DELTA, CHORD, CHORD BEARING. Lists curve data for lots 1-30.

CURVE TABLE with 6 columns: CURVE, LENGTH, RADIUS, TANGENT, DELTA, CHORD, CHORD BEARING. Lists curve data for lots 1-8.

CURVE TABLE with 6 columns: CURVE, LENGTH, RADIUS, TANGENT, DELTA, CHORD, CHORD BEARING. Lists curve data for lots 1-30.

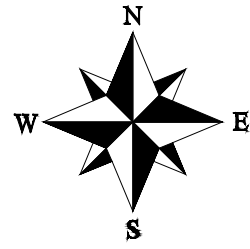
CURVE TABLE with 6 columns: CURVE, LENGTH, RADIUS, TANGENT, DELTA, CHORD, CHORD BEARING. Lists curve data for lots 1-8.

LINE TABLE with 3 columns: LINE, LENGTH, DIRECTION. Lists line data for lots 1-30.

LINE TABLE with 3 columns: LINE, LENGTH, DIRECTION. Lists line data for lots 1-8.

Vertical sidebar containing: SHEET 1 OF 1, DRAWN BY: J. McNEW, CHECKED BY: [blank], DATE: May 2020, PROJ. NO.: 15011, and DON MCCRARY & ASSOCIATES, INC. logo and address.

Doc: May 06, 2020, 3:49pm User: jmcnew  
File: \DWG-HAD-1\Project\DWG\15011\RESIGN PLAT 2015-07-24 - MARKETING PLAT PHASE I.dwg



**LEGEND**

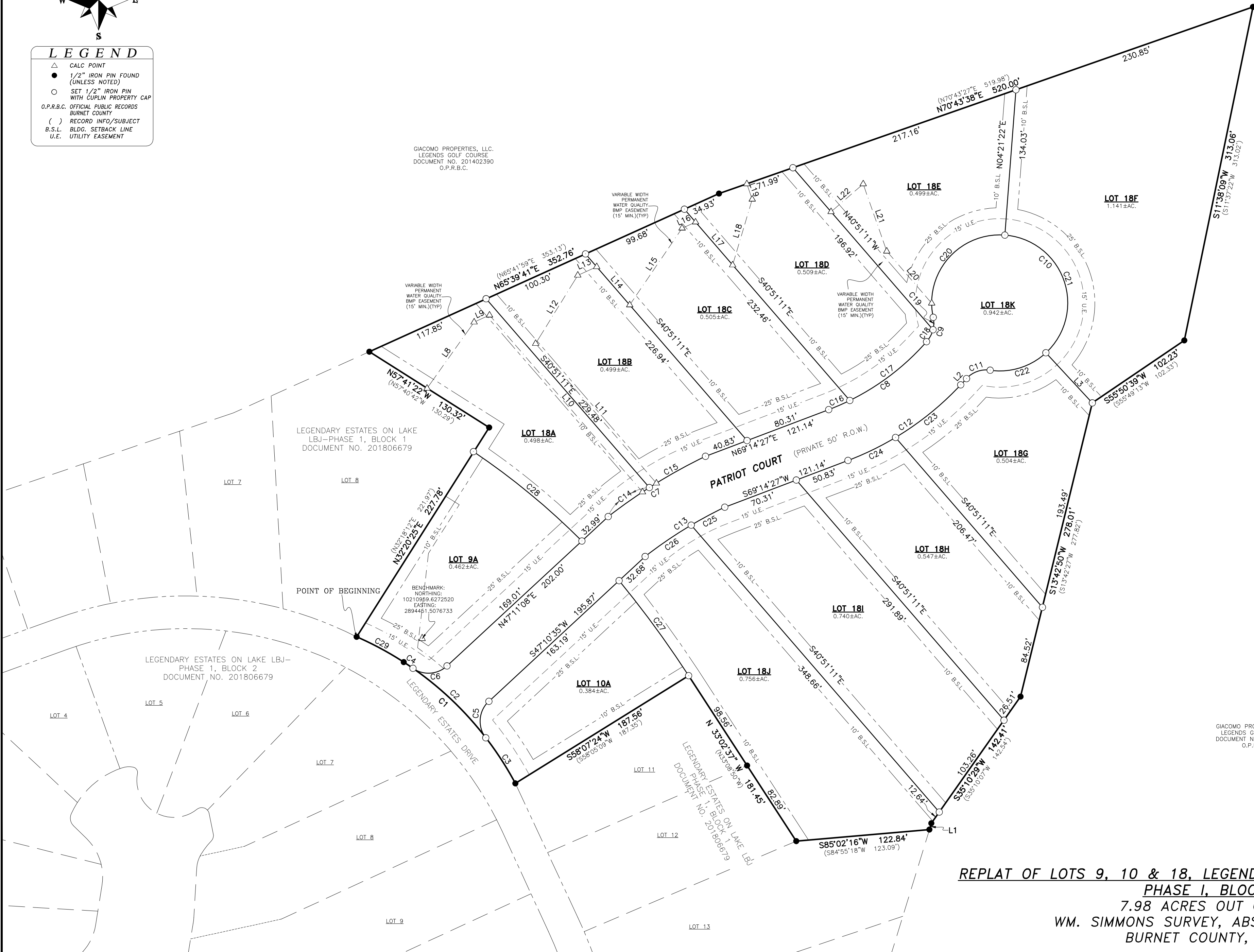
- △ CALC POINT
- 1/2" IRON PIN FOUND (UNLESS NOTED)
- SET 1/2" IRON PIN WITH CUPLIN PROPERTY CAP
- O.P.R.B.C. OFFICIAL PUBLIC RECORDS BURNET COUNTY
- ( ) RECORD INFO/SUBJECT
- B.S.L. BLDG. SETBACK LINE
- U.E. UTILITY EASEMENT

GIACOMO PROPERTIES, LLC.  
LEGENDS GOLF COURSE  
DOCUMENT NO. 201402390  
O.P.R.B.C.

GIACOMO PROPERTIES, LLC.  
LEGENDS GOLF COURSE  
DOCUMENT NO. 201402390  
O.P.R.B.C.

GIACOMO PROPERTIES, LLC.  
LEGENDS GOLF COURSE  
DOCUMENT NO. 201402390  
O.P.R.B.C.

GIACOMO PROPERTIES, LLC.  
LEGENDS GOLF COURSE  
DOCUMENT NO. 201402390  
O.P.R.B.C.



**REPLAT OF LOTS 9, 10 & 18, LEGENDARY ESTATES ON LAKE LBJ  
PHASE I, BLOCK 1  
7.98 ACRES OUT OF THE  
WM. SIMMONS SURVEY, ABSTRACT NO. 830  
BURNET COUNTY, TEXAS**

PROJ. NO. 21851  
PREPARED FOR: GARY MARTIN  
TECH: A.HARDY  
APPROVED: DANNY STARK  
FIELDWORK PERFORMED ON:  
COPYRIGHT: 2021

1500 OLLIE LANE  
MARBLE FALLS, TX. 78654  
PH. 325-388-3300/830-693-8815  
WWW.CUPLINASSOCIATES.COM

SCALE 1" = 60'  
0 30 60

2	
1	
DATE	NO.
REVISIONS	